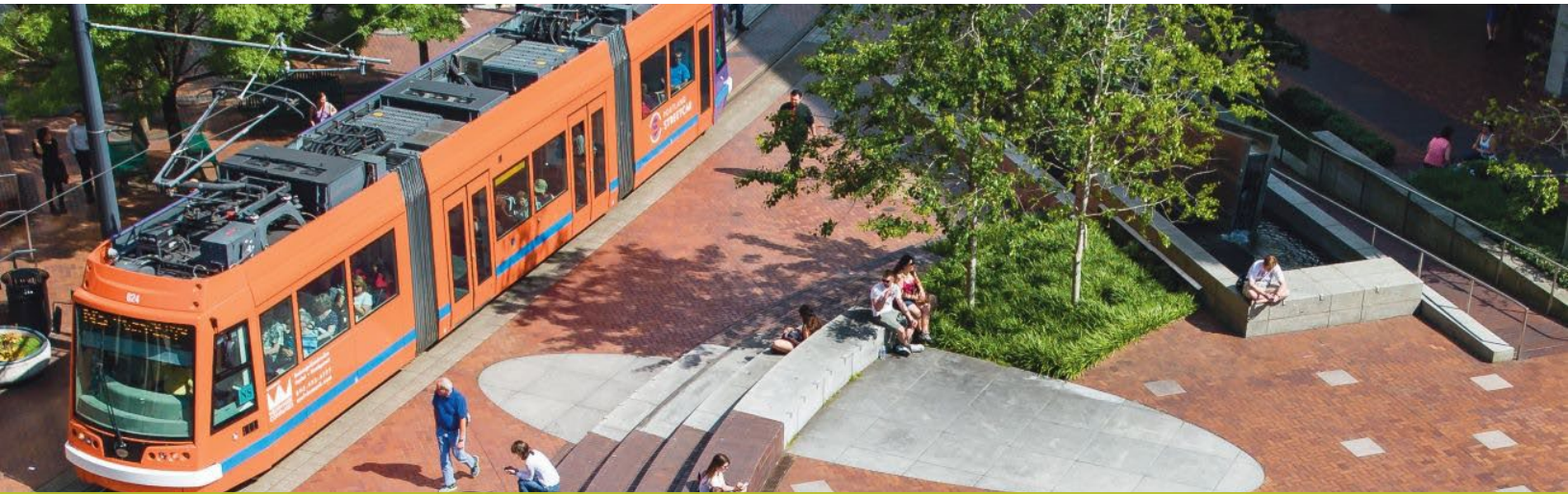




Portland State  
UNIVERSITY



## POSITION PROFILE

**Senior Instructional Faculty (2)**  
**Teaching Assistant Professor (1)**

Electrical and Computer Engineering Department  
Maseeh College of Engineering and Computer Science

May 2022





# THE POSITIONS

## Senior Instructional Faculty (2) and Teaching Assistant Professor (1)

The Electrical and Computer Engineering (ECE) Department at Portland State University seeks outstanding candidates for two instructional faculty positions and one teaching assistant professor. Recent graduates are encouraged to apply.

These faculty members will be responsible for teaching two 4-credit courses each quarter. Experience in at least one of the areas of Digital Design, Microprocessor Design, and Computer Architecture; ASIC & IC Design and Test; and Design Verification & Validation is preferred. Additional responsibilities include service to the department, College and University, program direction, and supervision of one or two senior capstone teams. These positions are focused on instructional responsibilities but may include supporting scholarly activities and service to the community and profession.

These are nine-month, full-time academic appointments that are eligible for a continuous appointment after a probationary period.

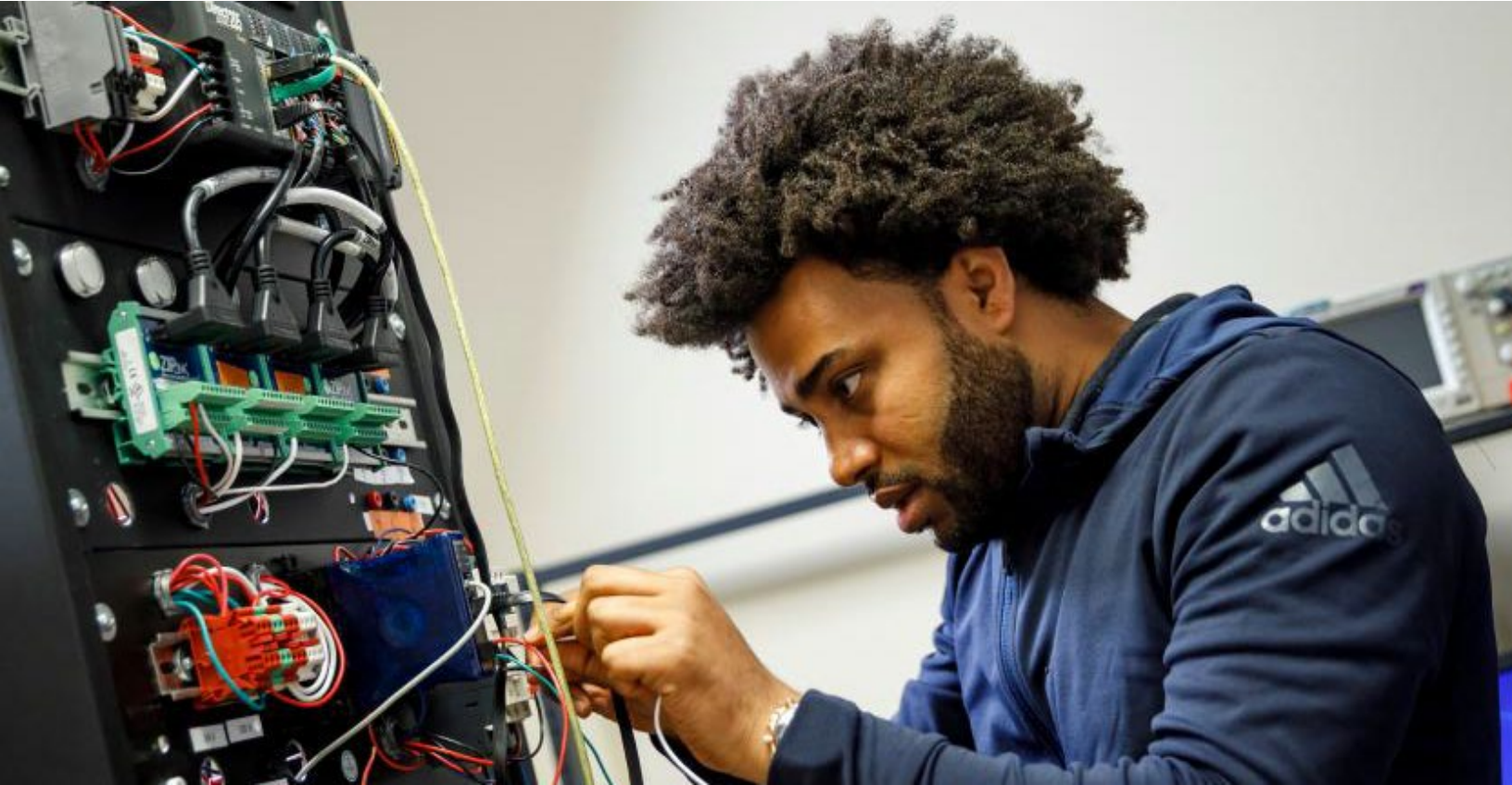
### INSTRUCTIONAL ACTIVITIES:

Instructional activities are related to developing and teaching undergraduate and graduate electrical and computer engineering courses. Anticipated teaching and related duties include:

- Teaching undergraduate and graduate courses as assigned, including instruction in laboratory settings.
- Coordinating the work supervision of graduate teaching assistants, graders, course assistants, student advising, office hours.
- Working with modern instructional tools and course management systems such as Canvas.
- Development, coordination, and evaluation of course materials that fit within the overall curriculum.
- Participation in assessment and accreditation activities.
- Preparation of students to be successful leaders in their chosen profession.
- Creation of an inclusive classroom environment and experience.

### QUALIFICATIONS:

- M.S. in Electrical and Computer Engineering or a related discipline (Instructional Faculty position).
- Ph.D. in Electrical and Computer Engineering or a related discipline (Teaching Assistant Professor position).
- Demonstrated excellence in teaching undergraduate and graduate electrical or computer engineering courses.
- Ability to teach in both downtown Portland and Hillsboro during days and evenings.
- Knowledge of current trends and best practices in engineering pedagogy and assessment methods.
- Creates an environment that acknowledges, encourages, and celebrates differences.
- Functions and communicates effectively and respectfully within the context of varying beliefs, behaviors, orientations, identities, and cultural backgrounds.
- Seeks opportunities to gain experience working and collaborating in diverse, multicultural, and inclusive settings with a willingness to change for continual improvement.
- Adheres to all PSU's policies including the policies on Prohibited Discrimination & Harassment and the Professional Standards of Conduct.



### THE DEPARTMENT:

The Electrical and Computer Engineering Department serves a diverse population of students including military veterans, community college transfers, students with prior work experience, and international students from around the world. The Department offers ABET-accredited B.S. degree programs in Electrical Engineering and Computer Engineering, as well as M.S. and Ph.D. programs. The department has one of the largest M.S. programs in the country and the largest in the Pacific Northwest. It is a vibrant, strong, well-regarded M.S. program in computer architecture and design verification, whose graduates are highly sought after. The Department has 26 faculty members, including three IEEE Fellows and an ACM Fellow, and approximately 1,000 enrolled students.

For additional information please visit: <https://www.pdx.edu/electrical-computer-engineering/>

### THE COLLEGE:

The [Maseeh College of Engineering and Computer Science](#) offers bachelor's, master's, and doctoral programs in engineering disciplines from five departments, employs 84 full-time faculty, and enrolls more than 3,000 students. The College is based in a state-of-the-art facility, the Northwest Center for Engineering, Science and Technology, and has steadily expanded its programs and student enrollment in recent years. The College is connected to Portland's growing, innovative industries and prepares students to gain competitive jobs in engineering and computer science. Maseeh College's close ties to leading tech companies provide the opportunity for students to build professional skills through internship programs while completing their degrees.

### THE UNIVERSITY:

Portland State University is one of Oregon's largest and most diverse public universities, and it is located in the heart of one of America's most progressive cities. PSU enrolls over 26,000 students and offers programs for bachelor's, master's, and doctoral degrees. The 50-acre downtown campus places students in a vibrant center of culture, business and technology, allowing students to participate in internships, co-ops and community-based projects. The Willamette River passes through downtown Portland and the Columbia River and the Pacific Ocean are nearby. Portland and the nearby Silicon Forest are hosts to many high-tech companies, particularly Intel, Siemens, Tektronix, Lattice, Synopsys, and Maxim.

## WHY CONSIDER THE OPPORTUNITY?

- **Dynamic department.** The growing department has one of the largest M.S. programs in the country and the largest in the Pacific Northwest.
- **Long-term career path.** Positions are on a continuous appointment track, which at PSU is similar to tenure-track.
- **Voting rights.** Significant involvement with governance in the department.
- **Great benefits.** The starting annual salary rate for this position will be competitive with an excellent benefits package including comprehensive health care; a generous retirement package; and reduced tuition rates for employee, spouse, or dependents at any of the Oregon University System schools.
- **Great location.** Portland is one of the most popular cities on the west coast.
- **Summers off!** Nine-month position.

## INQUIRIES, NOMINATIONS AND APPLICATIONS

Confidential review of applications will begin immediately and continue until the position is filled. **Applications can be submitted immediately and will be reviewed as they come in. Those received by May 31, 2022, will be given first consideration.**

Please submit your resume and a brief letter of interest.

To apply, go to: <https://theapplicantmanager.com/jobs?pos=su306>

### For more information or to offer recommendations or nominations:

#### Caitlin Hummel

Senior Consultant  
Summit Search Solutions, Inc.  
(585) 880-7550  
[chummel@summitsearchsolutions.com](mailto:chummel@summitsearchsolutions.com)

#### Stephanie Rivas-Fowler

Senior Consultant  
Summit Search Solutions, Inc.  
(530) 677-9945  
[srivasfowler@summitsearchsolutions.com](mailto:srivasfowler@summitsearchsolutions.com)

*Portland State University is an affirmative action/equal opportunity employer and seeks candidates who are committed to the highest standards of scholarship and professional activities and a campus climate that supports equality, diversity, and inclusion.*



Summit Search Solutions, Inc. is a boutique executive search firm dedicated to serving the education and nonprofit sectors nationwide. Summit has a team of experienced recruiting consultants in strategic locations across the country including California, Colorado, Kansas, Maryland, New York, North Carolina, and Utah.







## ABOUT PORTLAND, OREGON

Big city excitement and small-town charm make Portland one of the most popular cities on the west coast. Situated approximately 70 miles from the Pacific Ocean where the Columbia and Willamette Rivers meet, Portland enjoys a magnificent setting, combining sparkling waterways with lush greenery rarely found in urban settings. The Portland metro area is home to approximately 2.35 million residents. Portland is widely recognized in national surveys and rankings as one of America's most livable cities.

Portland's historic old town, many galleries and museums, Saturday Market, Waterfront Park and an abundance of fine restaurants keep residents and visitors busy and satisfied. The performing arts in the area offer classical music, jazz, and blues as well as theater and dance. Portland is just a short distance from the spectacular Columbia Gorge and Multnomah Falls, windsurfing at Hood River, valley wineries, skiing at Mt. Hood, and the drama of the Oregon coast.

Portland is known for its extensive park system of more than 200 parks. These encompass such areas as the elm-shaded South Park Blocks in the downtown area and Washington Park, home of the International Rose Test Garden and a Japanese Garden. Portland's Forest Park, over 5,000 acres, is the largest park within a city in the U.S. and has nearly 80 miles of walking trails.

Portland's award-winning mass transit system is one of the most extensive and advanced in the U.S. and includes buses and the MAX, an urban light rail line, as well as a downtown transit mall.

*To learn more about Portland and surrounding areas:*

Information about Portland, OR: <https://www.travelportland.com/>  
 Portland Regional Chamber of Commerce: <https://www.portlandregion.com/>  
 City of Portland, OR: <https://www.portlandoregon.gov/>

