



KNIGHT
CANCER
Institute



POSITION PROFILE

Senior Scientist

CEDAR (Cancer Early Detection Advanced Research)

OHSU Knight Cancer Institute

March 2022

This search is managed in partnership with Summit Search Solutions, Inc.



THE POSITION

As a **Senior Scientist** in the area of **the biology of early cancer**, you will work to develop major scientific project initiatives in the laboratory and aid in overseeing the implementation and execution of identified research projects. The CEDAR research programs continue to gain mechanistic understanding and further technology development for early cancer detection and treatment. Our goals are to rapidly develop and translate novel assays/techniques/tests/treatments into the clinic via clinical trials and/or new companies. CEDAR funds its own research and centralizes its resources, enabling scientists to focus on the science and the research.

Example areas in **the biology of early cancer** of interest to CEDAR include but are not limited to:

- Organoid model systems to investigate the genesis of early cancers in specific tissues.
- Impact of the tumor ecosystem and microenvironment on benign to lethal tumor transitions.
- Characterization of intrinsic properties of early cancer cells through single cell omics platforms.
- Changing immune response in early transitions to lethal cancers.
- “Humanized” murine models of early cancer genesis and progression.

Primary Responsibilities

- Leading and executing collaborative research projects focusing on assay or technology development that advances cancer early detection research.
- Supervising and providing guidance and mentorship to trainees and other researchers at various levels within CEDAR.
- Designing and directing or executing experiments; and establishing robust laboratory procedures and systems.
- Contributing to and building CEDAR’s culture of team science, including demonstrating [CEDAR’s guiding principles](#).

Scientific Project Oversight: With input from CEDAR leadership, help to develop and oversee laboratory research projects. Including identification of scientific problem, design of approach to address it, and identification, acquisition, and management of resources to perform investigations.

- Assign personnel, track their progress, and ensure maximum productivity.
- Foster and support teamwork.
- Provide training and guidance to postdoctoral fellows, clinical research fellows, graduate students and undergraduate students.

Laboratory Research Projects: Independently develop, manage and conduct laboratory research experiments, determining the most suitable methods to be used and executing those methods in lab.

- Interpret and perform complex data analysis on experimental results and determine whether they are consistent with goals.
- Ensure that research team members maintain accurate and detailed records of all experimental procedures, data collections, and analysis performed.
- Maintain a high level of professional expertise through familiarity with current scientific literature.
- As needed, develop innovative techniques and experimental systems to meet research program goals.

Scientific Writing and Project Proposal Development:

- Prepare research findings for presentation at scientific meetings and conferences and manuscripts for publication.
- Prepare research project proposals for internal review, prepare annual or bi-annual research progress summaries and presentations for CEDAR scientists and staff.

Laboratory Organization and Compliance:

- Develop and implement procedures and systems to maximize the organization and efficiency within designated projects.
- Mentor and train lab members on lab practices and protocols.
- Ensure that staff is adequately trained to meet compliance for regulatory board reviews as required.
- Aid in the submission of specific protocols to the Institutional Review Board and other regulatory review boards.

Collaborative Interactions:

- Develop, foster, and maintain relationships with partners in academia and the pharmaceutical/biotechnology industries.
- Oversee the advancement of specific sponsored research agreement (SRA) funded projects and ensure that external partners receive regular project updates. Participate in occasional teaching assignments.

Every OHSU Knight Cancer employee is expected to embody the Knight Cancer Institute's guiding principles:

- We act **BOLDLY**—Breakthroughs require pushing the boundaries of science, exploring new frontiers, and thinking differently.
- We **SUPPORT** each other—Respect leads to trust, which leads to excellence.
- We work as a **CONNECTED** team—We must leverage our collective brainpower to conquer cancer because no one individual can do it alone.

Our Commitment to Diversity: CEDAR is committed to increasing the diversity of the campus community. We are dedicated to promoting inclusion and multiculturalism by having outstanding researchers of diverse backgrounds work together on multiple projects. We encourage high-risk, high-reward research projects because defeating cancer requires out-of-the-box thinking and new perspectives. Our research is milestone-driven to ensure that each project is fulfilling its stated goals. CEDAR's Diversity Advisory Committee meets regularly and is engaged in actively refining CEDAR's culture, team science, communication, outreach, and recruitment to foster a more inclusive, equitable community.

Qualifications

MINIMUM:

- Doctoral degree in Biology or a closely related science field.
- 7+ years of relevant post-PhD work experience with exceptional expertise in your research field.
- Outstanding publication record, patent record, or translational experience.
- Ability to thrive within a matrixed environment and to hold both self and team members accountable for progress towards goals.
- Outstanding track record of mentoring junior staff.
- Ability to collaborate with a team.
- Leadership in serving as a boundary spanner, working to connect concepts across teams, and integrating multiple perspectives into a project.
- Models thoughtful risk-taking, conflict management, fostering inclusion, sharing lessons learned, and pivoting when new information makes a new project path advisable.

PREFERRED:

- At least 10+ years of relevant post-PhD work experience.
- At least 4 years of supervisory and project management experience.
- Experience in cancer research.
- Expertise in early cancer detection research.



ABOUT THE OHSU KNIGHT CANCER INSTITUTE

At the OHSU Knight Cancer Institute, our vision is a world freed from the burden of cancer. Our mission is to end cancer as we know it, through innovative, collaborative research and education, providing prevention, detection, and care – one person at a time.

As pioneers in personalized cancer medicine, we continue to change the way the world understands and fights this disease by:

- Providing individually-tailored, compassionate care for every patient, from diagnosis through survivorship.
- Discovering new ways to prevent cancer.
- Developing new personalized cancer therapies.

The OHSU Knight Cancer Institute is on the leading edge of discovering new ways to prevent, detect and treat cancer. With over 400 clinical trials currently in progress, we are searching for new cures, standards of care, treatments and therapies for cancer.



The OHSU Knight Cancer Institute became Oregon’s only NCI-designated cancer center in 1997. The institute is known internationally for its leadership in fighting cancer at the molecular level. The most celebrated cancer discovery in a generation—the targeted drug Gleevec—was developed at OHSU by [Brian J. Druker, M.D.](#), the director of the OHSU Knight Cancer Institute and JELD-WEN Chair of Leukemia Research. Druker is also a member of the National Academy of Sciences and a former Howard Hughes Medical Investigator.

Druker has been recognized with numerous awards, including the Sjöberg Prize from the Royal Swedish Academy of Sciences, the Warren Alpert Prize from Harvard Medical School, the Lasker-DeBakey Award for Clinical Medical Research, the Japan Prize in Healthcare and Medical Technology, the Tang Prize in Biopharmaceutical Science, and the Prince Mahidol Award for outstanding achievements in medicine and public health worldwide. He has been elected to the National Academy of Medicine, the National Academy of Sciences and the American Academy of Arts and Sciences.

To learn more visit: <https://www.ohsu.edu/knight-cancer-institute>

ABOUT CEDAR (Cancer Early Detection Advanced Research)

The Cancer Early Detection Advanced Research Center (CEDAR) is a collaborative organization within the OHSU Knight Cancer Institute. At CEDAR, our mission is to detect and stop lethal cancers at the earliest stage, because early detection saves lives. This is an ambitious goal, one that requires diversity of perspectives, creativity, and innovation. We are composed of 100+ chemists, biomedical engineers, computationalists, clinicians, and support staff, conducting groundbreaking translational cancer research.

We fund our own research and centralize our resources and support in order to accelerate discovery. We are an organization that encourages researchers from any level, from graduate students to senior scientists to faculty, to propose a project idea, secure funding, and lead a project.

Our guiding principles inform everything we do. They inspire our organizational structure, our research support, and our long-term strategy.



WE ARE ONE TEAM

We share a common vision and leadership opportunities are open to everyone.



WE ARE HUMBLE

We ask questions in order to understand and improve our work.



WE ARE INNOVATIVE

We emphasize creativity and risk-taking to accelerate the best ideas and challenge the status quo.



WE ARE DIVERSE

We seek unique perspectives and backgrounds to solve complex problems.



WE ARE A COMMUNITY

We share our space, resources, and talents, and we celebrate our successes and failures together.



WE ARE FOCUSED

We use our resources responsibly and implement new ideas quickly and thoughtfully.

At CEDAR, we are changing how cancer research is done.

We conduct groundbreaking translational cancer research to help improve the lives and health of our community. We have three major societal aims: reduce cancer mortality and maintain a high quality of life for patients; create a global early detection community; and have a positive impact on the Oregon economy.

To learn more visit: <https://www.ohsu.edu/knight-cancer-institute/cedar>



ABOUT OREGON HEALTH & SCIENCE UNIVERSITY

OHSU is Oregon’s only public academic health center, and a system of hospitals and clinics across Oregon and southwest Washington. We are an institution of higher learning, with schools of medicine, nursing, pharmacy, dentistry and public health – with a network of campuses and partners throughout Oregon. We are a national research hub, with thousands of scientists developing lifesaving therapies and deeper understanding. We are a statewide economic engine and Portland’s largest employer. And as a public organization, we provide services for the most vulnerable Oregonians, and outreach to improve health in communities across the state.

Across our missions of healing, teaching and discovery, we unite some of the world’s brightest minds in a singular vision: to rethink everything. We are creators of precision cancer medicine. We are innovators of an education model that lets each student forge a unique path. We are the top-rated health care provider in Oregon.

We are also a community — one of different colors, genders, orientations, cultures and interests. Each of us chose Oregon’s lush forests and sapphire rivers. Each of us chose OHSU’s relentless pursuit of new ideas. Together we are working toward a cause bigger than any of us: to bring health and hope to all. To learn more about OHSU Facts: <https://www.ohsu.edu/about/ohsu-facts>

To view OHSU’s Mission: <https://www.ohsu.edu/about/ohsu-vision-mission-and-values>

DIVERSITY AND INCLUSION

Over the University’s history, OHSU has grown into a world-class teaching hospital and research center that educates, employs, and cares for people from many cultures, belief systems, and experiences. Diversity is vitally important to OHSU’s evolution as a world-class health and science university. Being a diverse institution creates an intellectually vibrant climate where a variety of ideas and perspectives work together to foster innovation. Diversity is key to maintaining a competitive workforce advantage. Integrating diversity into all areas and all parts of its mission is critical to OHSU’s strategic goal of being a great organization, “diverse in people and ideas.” OHSU is dedicated to improving the health and quality of life for all Oregonians through excellence, innovation and leadership in healthcare, education, research, and community outreach and recognizes that diversity of people and ideas are essential to succeed and thrive. To learn more about OHSU’s Anti-Racism Action Plan: <https://www.ohsu.edu/about/ohsu-anti-racism-action-plan>

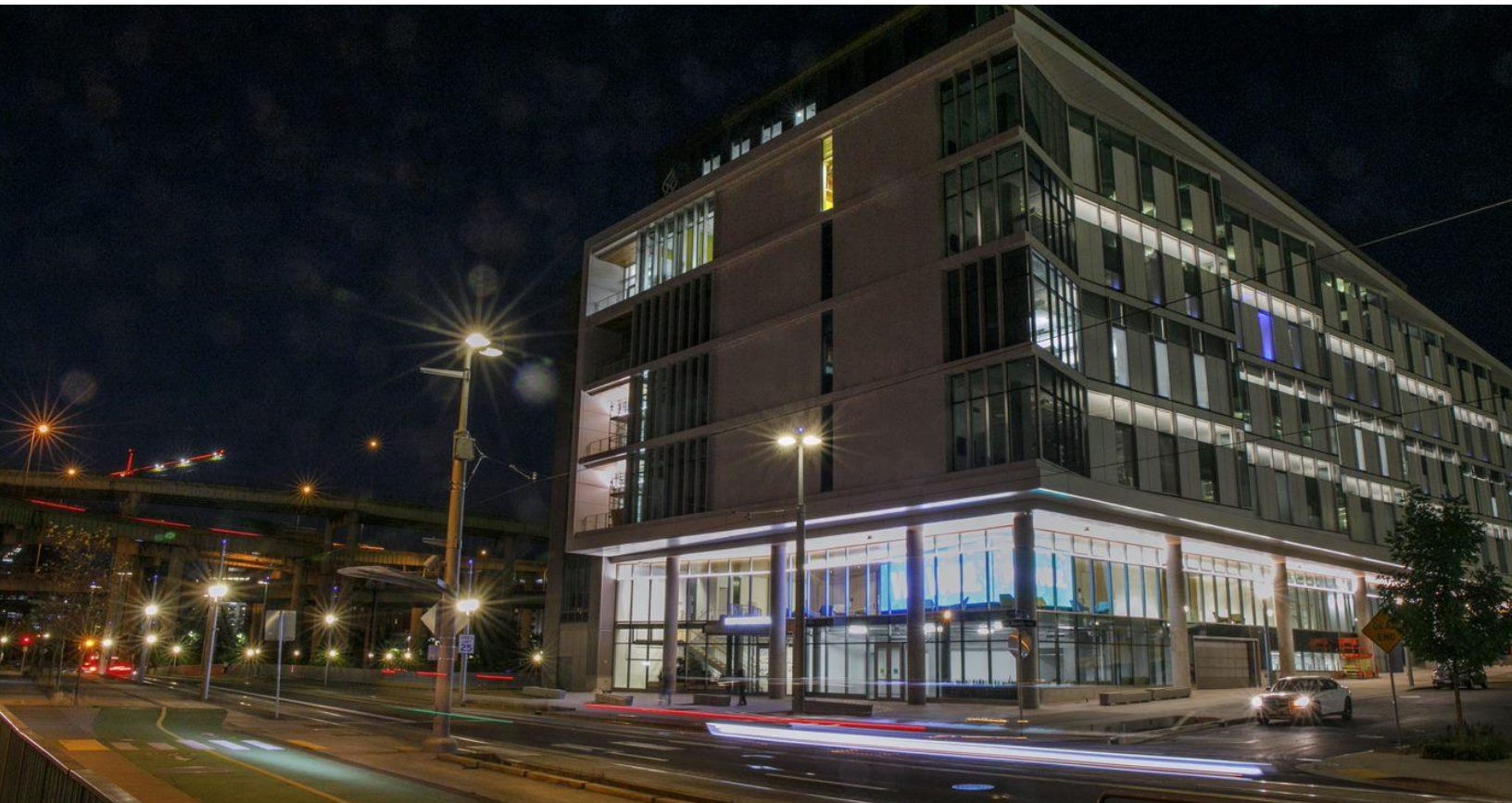
OHSU CAMPUS AND COMMUNITY

MARQUAM HILL is OHSU's main campus, comprised of 33 buildings on 116 acres, and surrounded by forested park land and residential neighborhoods. Mackenzie Hall was the first building, constructed in 1919. Though the topography makes it a difficult environment for growth, it is the center of OHSU activity.

SOUTH WATERFRONT CENTRAL DISTRICT is connected to Marquam Hill with a 3-minute trip on the Portland Aerial Tram. OHSU has developed a third of its ten acres in the Central District, beginning with the Center for Health & Healing (CHH-1) which opened in 2006, the Knight Cancer Research Building (KCRB) which opened in 2018, and, CHH-2 and Rood Family Pavilion (RPV) which opened in 2019. CEDAR is housed in the Knight Cancer Research Building, a seven-story, 320,000-square-foot building designed for collaboration. This state-of-the-art research facility features an open laboratory design, centralized, shared equipment, and core facilities in order to bring together people from different scientific disciplines and accelerate research progress.

SCHNITZER CAMPUS's 19 acres was donated to OHSU in 2004 by the Schnitzer Investment Corporation—a former steel scrap yard that was remediated by both parties. The Robertson Collaborative Life Sciences Building was the first building to open, in 2011, and is shared between OHSU, Portland State University and Oregon State University. The Knight Cancer Research Building opened in September 2018. OHSU has a long history of engagement with Oregonians, with volunteer faculty teaching students in clinics, hospitals, and other community settings throughout Oregon and southwest Washington. The School of Nursing has campuses in Ashland, Klamath Falls, Monmouth, and La Grande. In 2015, OHSU established a Campus for Rural Health with sites in Klamath Falls, Coos Bay and La Grande. There are also significant programs in distance education at OHSU.

WEST CAMPUS, located in Hillsboro (30 miles west of Marquam Hill campus), is comprised of the Oregon National Primate Research Center (ONPRC) and Vaccine and Gene Therapy Institute (VGTI). The site is 154 acres, of which 62% is forest and floodplain that contribute to the security of the site and healthy ecosystems.





PROCEDURE FOR CANDIDACY

While applications and nominations will be accepted until the position is filled, parties who apply by **April 17, 2022** will be given first consideration. All applications and nominations will be held in confidence. Please submit a PDF version of your CV/resume, a letter of interest explaining your interest in and suitability for this position, and a Diversity Statement. The statement should describe your commitment and contributions to diversity, equity, and inclusion you have made in your career and/or will make toward greater diversity and antiracism through your work at CEDAR. For more information see [here](#). The length of the statement should be at least 1 paragraph and up to 1 page.

To apply online, go to <https://theapplicantmanager.com/jobs?pos=su291>

For more information or to offer recommendations or nominations:

Stephanie Rivas-Fowler

Senior Consultant

Summit Search Solutions, Inc.

Direct: 530-677-9945

srivasfowler@summitsearchsolutions.com

Carrie Coward

President

Summit Search Solutions, Inc.

Direct: 828-669-3850

ccoward@summitsearchsolutions.com

Oregon Health & Science University values a diverse and culturally competent workforce. OHSU is proud of its commitment to being an equal opportunity, affirmative action organization that does not discriminate against applicants on the basis of any protected class status, including disability status and protected veteran status. Individuals with diverse backgrounds and those who promote diversity and a culture of inclusion are encouraged to apply. To request reasonable accommodation contact the Affirmative Action and Equal Opportunity Department at [503-494-5148](tel:503-494-5148) or aaeo@ohsu.edu



[Summit Search Solutions, Inc.](#) is a boutique executive search firm dedicated to serving the education and nonprofit sectors nationwide. Based in Asheville, NC, Summit has a team of experienced recruiting consultants in strategic locations across the country including California, Kansas, Maryland, New York, North Carolina, and Utah.

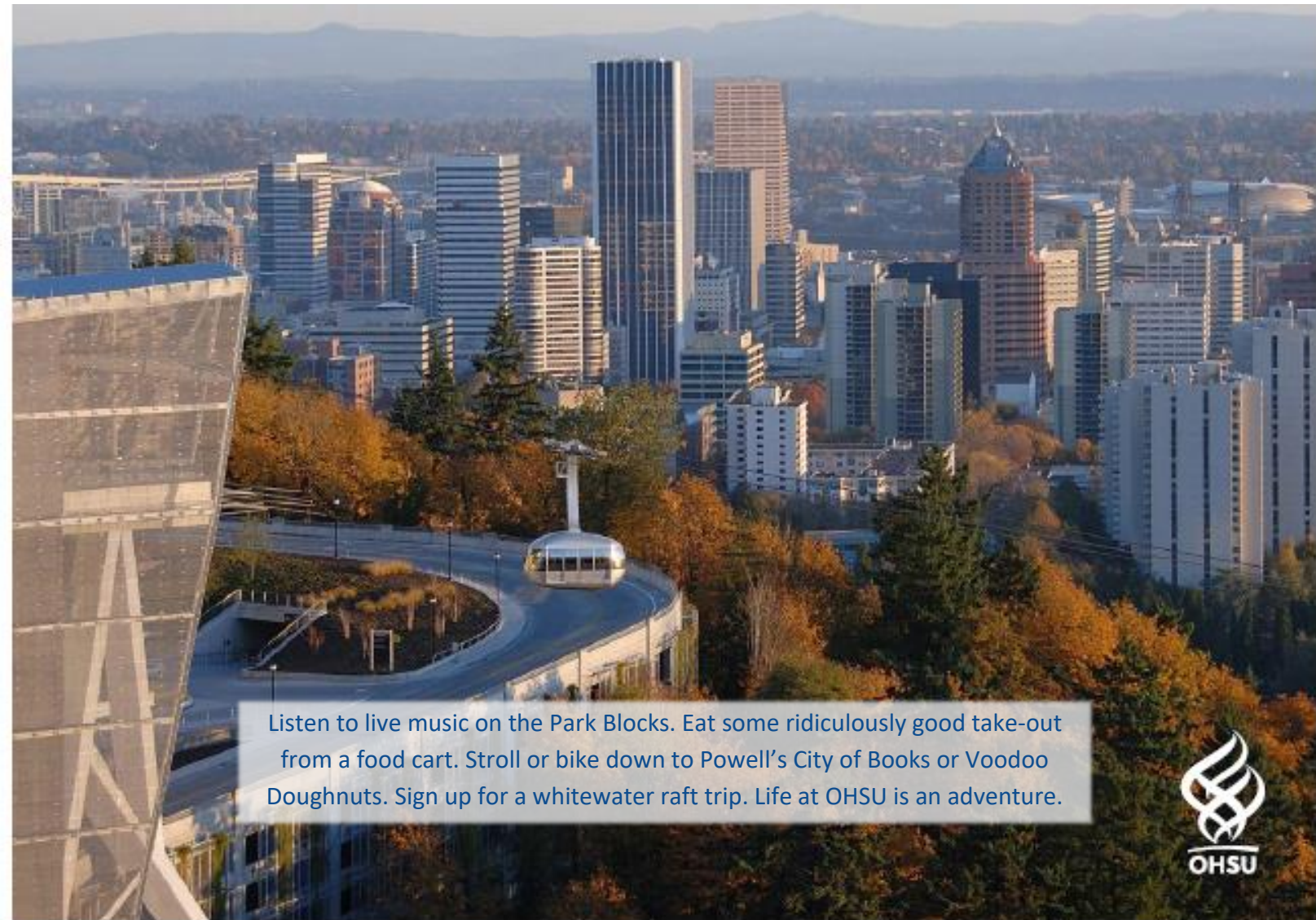
ABOUT PORTLAND, OREGON

Big city excitement and small-town charm make Portland, known as "the City of Roses" one of the most popular cities on the west coast. Situated approximately 70 miles from the Pacific Ocean where the Columbia and Willamette Rivers meet, Portland enjoys a magnificent setting, combining sparkling waterways with lush greenery rarely found in urban settings. Portland is home to approximately 610,000 residents and the population of the surrounding metropolitan area is approximately 2.35 million. Portland is widely recognized in national surveys and rankings as one of America's most livable cities. For more information about Portland, see: <https://www.travelportland.com/>

Portland's historic old town, many galleries and museums, Saturday Market, Waterfront Park and an abundance of fine restaurants keep residents and visitors busy and satisfied. The performing arts in the area offer classical music, jazz, and blues as well as theater and dance. Portland is just a short distance from the spectacular Columbia Gorge and Multnomah Falls, windsurfing at Hood River, valley wineries, skiing at Mt. Hood, and the drama of the Oregon coast.

Portland is known for its extensive park system of more than 200 parks. These encompass such areas as the elm-shaded South Park Blocks in the downtown area and Washington Park, home of the Rose Gardens and the Japanese Gardens. Portland's Forest Park, at nearly 5,000 acres, is the largest park within a city in the U.S. and has nearly 50 miles of walking trails.

Portland's award-winning mass transit system is one of the most extensive and advanced in the U.S. and includes buses and the MAX, an urban light rail line, as well as a downtown transit mall.

An aerial photograph of the Portland, Oregon skyline. In the foreground, a cable car is visible on a track, surrounded by trees with autumn foliage. The background shows a dense cluster of modern skyscrapers and buildings under a clear sky.

Listen to live music on the Park Blocks. Eat some ridiculously good take-out from a food cart. Stroll or bike down to Powell's City of Books or Voodoo Doughnuts. Sign up for a whitewater raft trip. Life at OHSU is an adventure.

