



KNIGHT
CANCER
Institute



POSITION PROFILE

Distinguished Scientist

CEDAR (Cancer Early Detection Advanced Research)

OHSU Knight Cancer Institute

November 2021

This search is managed in partnership with Summit Search Solutions, Inc.



THE POSITION

Distinguished Scientists have a record of scientific and technical accomplishments, outstanding track records of publications and grant funding, or patent and industry experience. They are international leaders in their basic science, engineering, or computational fields, with exceptional leadership experience and demonstrated success in leading, managing and participating in large collaborative projects or programs. They are leaders in developing strategic relationships and partnerships with key constituents.

As a Distinguished Scientist in CEDAR, you will:

- Focus on the mentorship of CEDAR researchers and project teams.
- Leverage your deep scientific knowledge, expertise, and experience, as well as your success in forming teams, to support CEDAR's team-based research.
- Cultivate collaboration and serve as a guide for CEDAR teams as they work together to solve cancer's toughest problems.
- Collaborate with other leaders and the OHSU Knight Cancer Institute to inform and guide CEDAR's scientific directions and focus areas.

Primary Responsibilities:

- Provide scientific, career, and team science-based mentorship and guidance to CEDAR researchers at all levels, including graduate students, postdoctoral fellows, RAs, scientists, and faculty.
- Collaborate to develop and implement mentorship resources for utilization by CEDAR researchers.
- Collaborate to identify critical, mission-focused scientific problems, design overall scientific approaches, and identify, acquire and manage resources to perform investigations.
- Serve as a standing member of the CEDAR Review Committee, which scores and decides on funding for internal research proposals.
- Develop, foster and maintain relationships with partners in academia and/or the pharmaceutical and biotechnology industries.
- Contribute to and build CEDAR's culture of team science, including demonstrating CEDAR's guiding principles.

Mentorship: Provide scientific and career mentorship and guidance to CEDAR researchers at all levels including graduate students, postdoctoral fellows, RAs, scientists, and faculty.

- Leverage deep experience to mentor teams to successfully secure research funding, including but not limited to advising how to write and present effective project and/or grant applications.
- Provide expert advice to teams on their scientific plan, methodology, and interpretation of complex experimental results.
- Mentor teams on preparing research results for presentation or written communication at internal and external forums such as review meetings, scientific advisory board meetings, abstracts, conference presentations, manuscripts, patent applications, and strategic partnerships.
- Maintain a high level of professional expertise through familiarity with current scientific literature.
- As needed, help develop innovative techniques and experimental systems to meet research program goals.

Scientific Oversight: In collaboration with CEDAR leadership, develop and oversee CEDAR team-science based research.

- Collaborate to identify critical, mission-focused scientific problems, design of overall scientific approaches, and to identify, acquire and manage resources to perform investigations.
- Promote team formation, assess team fit, review team progress, and promote maximum productivity.
- Foster and support teamwork.

Enabling Translational Research and Partnership Formation: Develop, foster and maintain relationships with partners in academia and/or in the pharmaceutical and biotechnology industries.

- Enable and support the formation of research collaborations.
- Promote the advancement of specific sponsored research agreement (SRA) funded projects and ensure that external partners receive regular project updates.

Every OHSU Knight Cancer employee is expected to embody the Knight Cancer Institute's guiding principles:

- We act **BOLDLY**—Breakthroughs require pushing the boundaries of science, exploring new frontiers, and thinking differently.
- We **SUPPORT** each other—Respect leads to trust, which leads to excellence.
- We work as a **CONNECTED** team—We must leverage our collective brainpower to conquer cancer because no one individual can do it alone.

Our Commitment to Diversity: CEDAR is committed to increasing the diversity of the campus community. We are dedicated to promoting inclusion and multiculturalism by having outstanding researchers of diverse backgrounds work together on multiple projects. We encourage high-risk, high-reward research projects because defeating cancer requires out-of-the-box thinking and new perspectives. Our research is milestone-driven to ensure that each project is fulfilling its stated goals. CEDAR's Diversity Advisory Committee meets regularly and is engaged in actively refining CEDAR's culture, team science, communication, outreach, and recruitment to foster a more inclusive, equitable community.

Qualifications

MINIMUM:

- Doctoral degree (Ph.D, M.D./Ph.D) in a relevant field (e.g., basic sciences, engineering, computation).
- 12 or more years of relevant work experience.
- Outstanding track record of mentorship.
- Exceptional ability to build productive cross-functional collaborations both internally and externally.
- Excellent communication, analytical, and organizational skills.
- Outstanding record of publications, and/or patents, and/or partnerships, and/or translational outputs.
- Exceptional technical proficiency, scientific creativity, innovation and collaborative ability.
- Understanding of program management including funding and workforce management.

PREFERRED:

- Five (5) or more years in a research position, including at least 4 years of supervisory and project management experience.
- Expertise in early cancer detection in one of CEDAR's focus areas: early detection technology, risk stratification, population health and prevention, prognosis assessment, early therapeutics.



ABOUT THE OHSU KNIGHT CANCER INSTITUTE

At the OHSU Knight Cancer Institute, our vision is a world freed from the burden of cancer. Our mission is to end cancer as we know it, through innovative, collaborative research and education, providing prevention, detection, and care – one person at a time.

As pioneers in personalized cancer medicine, we continue to change the way the world understands and fights this disease by:

- Providing individually-tailored, compassionate care for every patient, from diagnosis through survivorship.
- Discovering new ways to prevent cancer.
- Developing new personalized cancer therapies.

The OHSU Knight Cancer Institute is on the leading edge of discovering new ways to prevent, detect and treat cancer. With over 400 clinical trials currently in progress, we are searching for new cures, standards of care, treatments and therapies for cancer.



The OHSU Knight Cancer Institute became Oregon's only NCI-designated cancer center in 1997. The institute is known internationally for its leadership in fighting cancer at the molecular level. The most celebrated cancer discovery in a generation—the targeted drug Gleevec—was developed at OHSU by Brian J. Druker, M.D., the director of the OHSU Knight Cancer Institute and JELD-WEN Chair of Leukemia Research. Druker is also a member of the National Academy of Sciences and a former Howard Hughes Medical Investigator.

Druker has been recognized with numerous awards, including the Sjöberg Prize from the Royal Swedish Academy of Sciences, the Warren Alpert Prize from Harvard Medical School, the Lasker-DeBakey Award for Clinical Medical Research, the Japan Prize in Healthcare and Medical Technology, the Tang Prize in Biopharmaceutical Science, and the Prince Mahidol Award for outstanding achievements in medicine and public health worldwide. He has been elected to the National Academy of Medicine, the National Academy of Sciences and the American Academy of Arts and Sciences.

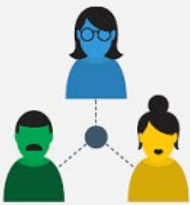
To learn more visit: <https://www.ohsu.edu/knight-cancer-institute>

ABOUT CEDAR (Cancer Early Detection Advanced Research)

The Cancer Early Detection Advanced Research Center (CEDAR) is a collaborative organization within the OHSU Knight Cancer Institute. At CEDAR, our mission is to detect and stop lethal cancers at the earliest stage, because early detection saves lives. This is an ambitious goal, one that requires diversity of perspectives, creativity, and innovation. We are composed of 100+ chemists, biomedical engineers, computationalists, clinicians and support staff, conducting groundbreaking translational cancer research.

We fund our own research and centralize our resources and support in order to accelerate discovery. We are an organization that encourages researchers from any level, from graduate students to senior scientists to faculty, to propose a project idea, secure funding, and lead a project.

Our guiding principles inform everything we do. They inspire our organizational structure, our research support, and our long-term strategy.



WE ARE ONE TEAM

We share a common vision and leadership opportunities are open to everyone.



WE ARE DIVERSE

We seek unique perspectives and backgrounds to solve complex problems.



WE ARE HUMBLE

We ask questions in order to understand and improve our work.



WE ARE A COMMUNITY

We share our space, resources, and talents, and we celebrate our successes and failures together.



WE ARE INNOVATIVE

We emphasize creativity and risk-taking to accelerate the best ideas and challenge the status quo.



WE ARE FOCUSED

We use our resources responsibly and implement new ideas quickly and thoughtfully.

At CEDAR, we are changing how cancer research is done.

We conduct groundbreaking translational cancer research to help improve the lives and health of our community. We have three major societal aims: reduce cancer mortality and maintain a high quality of life for patients; create a global early detection community; and have a positive impact on the Oregon economy.

To learn more visit: <https://www.ohsu.edu/knight-cancer-institute/cedar>



ABOUT OREGON HEALTH & SCIENCE UNIVERSITY

OHSU is Oregon's only public academic health center, and a system of hospitals and clinics across Oregon and southwest Washington. We are an institution of higher learning, with schools of medicine, nursing, pharmacy, dentistry and public health – with a network of campuses and partners throughout Oregon. We are a national research hub, with thousands of scientists developing lifesaving therapies and deeper understanding. We are a statewide economic engine and Portland's largest employer. And as a public organization, we provide services for the most vulnerable Oregonians, and outreach to improve health in communities across the state.

Across our missions of healing, teaching and discovery, we unite some of the world's brightest minds in a singular vision: to rethink everything. We are creators of precision cancer medicine. We are innovators of an education model that lets each student forge a unique path. We are the top-rated health care provider in Oregon.

We are also a community — one of different colors, genders, orientations, cultures and interests. Each of us chose Oregon's lush forests and sapphire rivers. Each of us chose OHSU's relentless pursuit of new ideas. Together we are working toward a cause bigger than any of us: to bring health and hope to all. To learn more about OHSU Facts: <https://www.ohsu.edu/about/ohsu-facts>

To view OHSU's Mission: <https://www.ohsu.edu/about/ohsu-vision-mission-and-values>

DIVERSITY AND INCLUSION

Over the University's history, OHSU has grown into a world-class teaching hospital and research center that educates, employs, and cares for people from many cultures, belief systems, and experiences. Diversity is vitally important to OHSU's evolution as a world-class health and science university. Being a diverse institution creates an intellectually vibrant climate where a variety of ideas and perspectives work together to foster innovation. Diversity is key to maintaining a competitive workforce advantage. Integrating diversity into all areas and all parts of its mission is critical to OHSU's strategic goal of being a great organization, "diverse in people and ideas." OHSU is dedicated to improving the health and quality of life for all Oregonians through excellence, innovation and leadership in healthcare, education, research, and community outreach and recognizes that diversity of people and ideas are essential to succeed and thrive. To learn more about OHSU's Anti-Racism Action Plan: <https://www.ohsu.edu/about/ohsu-anti-racism-action-plan>

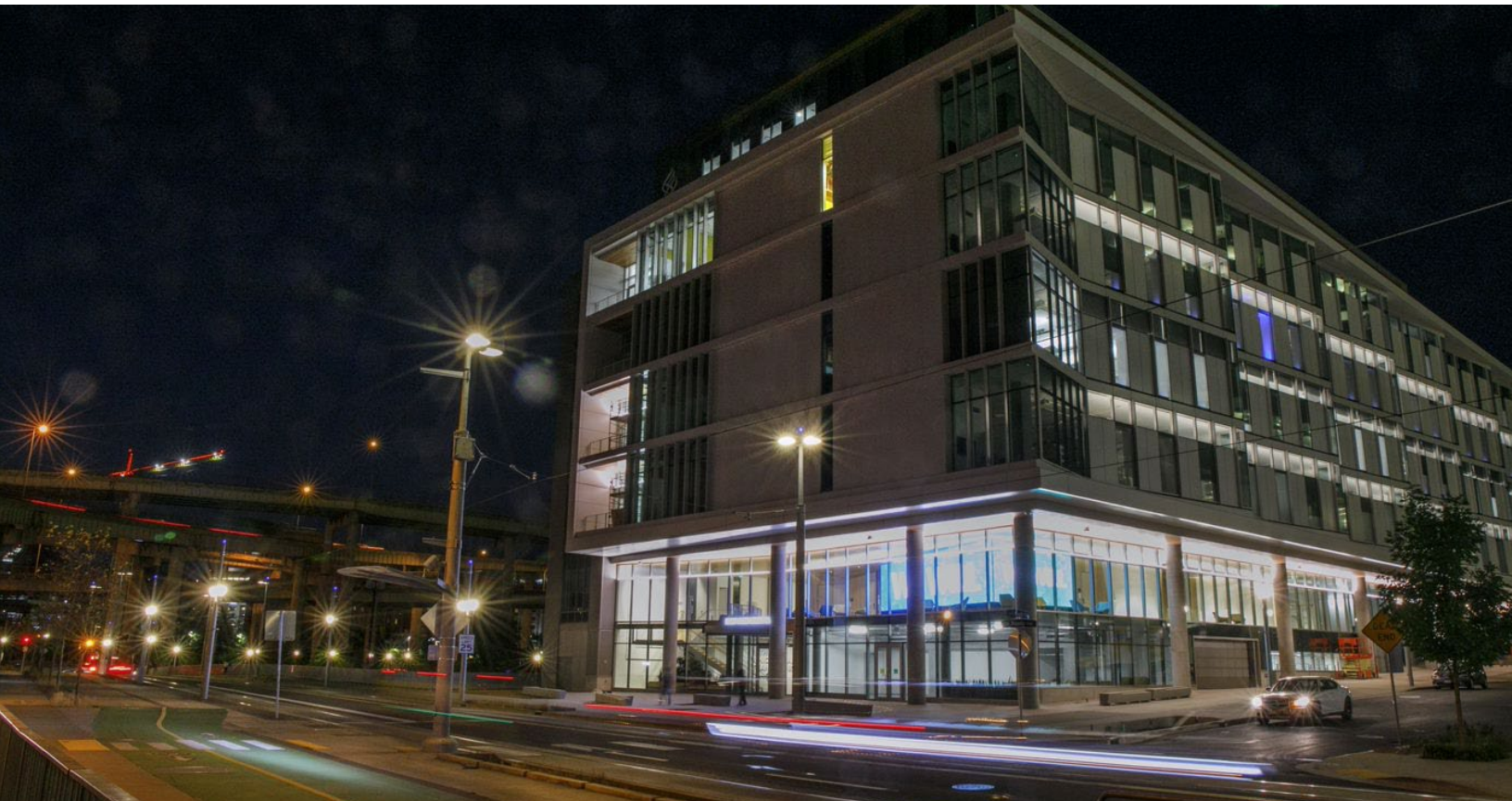
OHSU CAMPUS AND COMMUNITY

MARQUAM HILL is OHSU's main campus, comprised of 33 buildings on 116 acres, and surrounded by forested park land and residential neighborhoods. Mackenzie Hall was the first building, constructed in 1919. Though the topography makes it a difficult environment for growth, it is the center of OHSU activity.

SOUTH WATERFRONT CENTRAL DISTRICT is connected to Marquam Hill with a 3-minute trip on the Portland Aerial Tram. OHSU has developed a third of its ten acres in the Central District, beginning with the Center for Health & Healing (CHH-1) which opened in 2006, the Knight Cancer Research Building (KCRB) which opened in 2018, and, CHH-2 and Rood Family Pavilion (RPV) which opened in 2019. CEDAR is housed in the Knight Cancer Research Building, a seven-story, 320,000-square-foot building designed for collaboration. This state-of-the-art research facility features an open laboratory design, centralized, shared equipment, and core facilities in order to bring together people from different scientific disciplines and accelerate research progress.

SCHNITZER CAMPUS's 19 acres was donated to OHSU in 2004 by the Schnitzer Investment Corporation—a former steel scrap yard that was remediated by both parties. The Robertson Collaborative Life Sciences Building was the first building to open, in 2011, and is shared between OHSU, Portland State University and Oregon State University. The Knight Cancer Research Building opened in September 2018. OHSU has a long history of engagement with Oregonians, with volunteer faculty teaching students in clinics, hospitals, and other community settings throughout Oregon and southwest Washington. The School of Nursing has campuses in Ashland, Klamath Falls, Monmouth, and La Grande. In 2015, OHSU established a Campus for Rural Health with sites in Klamath Falls, Coos Bay and La Grande. There are also significant programs in distance education at OHSU.

WEST CAMPUS, located in Hillsboro (30 miles west of Marquam Hill campus), is comprised of the Oregon National Primate Research Center (ONPRC) and Vaccine and Gene Therapy Institute (VGTI). The site is 154 acres, of which 62% is forest and floodplain that contribute to the security of the site and healthy ecosystems.





PROCEDURE FOR CANDIDACY

While applications and nominations will be accepted until the position is filled, parties who apply by **January 5, 2022** will be given first consideration. All applications and nominations will be held in confidence. Please submit a PDF version of your CV/resume and a letter of interest explaining your interest in and suitability for this position.

To apply online, go to <https://theapplicantmanager.com/jobs?pos=su266>

For more information or to offer recommendations or nominations:

Stephanie Rivas-Fowler

Senior Consultant

Summit Search Solutions, Inc.

Direct: 530-677-9945

srivasfowler@summitsearchsolutions.com

Carrie Coward

President

Summit Search Solutions, Inc.

Direct: 828-669-3850

ccoward@summitsearchsolutions.com

Oregon Health & Science University values a diverse and culturally competent workforce. OHSU is proud of its commitment to being an equal opportunity, affirmative action organization that does not discriminate against applicants on the basis of any protected class status, including disability status and protected veteran status. Individuals with diverse backgrounds and those who promote diversity and a culture of inclusion are encouraged to apply. To request reasonable accommodation contact the Affirmative Action and Equal Opportunity Department at [503-494-5148](tel:503-494-5148) or aaeo@ohsu.edu



Summit Search Solutions, Inc. is a boutique executive search firm dedicated to serving the education and nonprofit sectors nationwide. Based in Asheville, NC, Summit has a team of experienced recruiting consultants in strategic locations across the country including California, Kansas, Maryland, New York, and North Carolina.

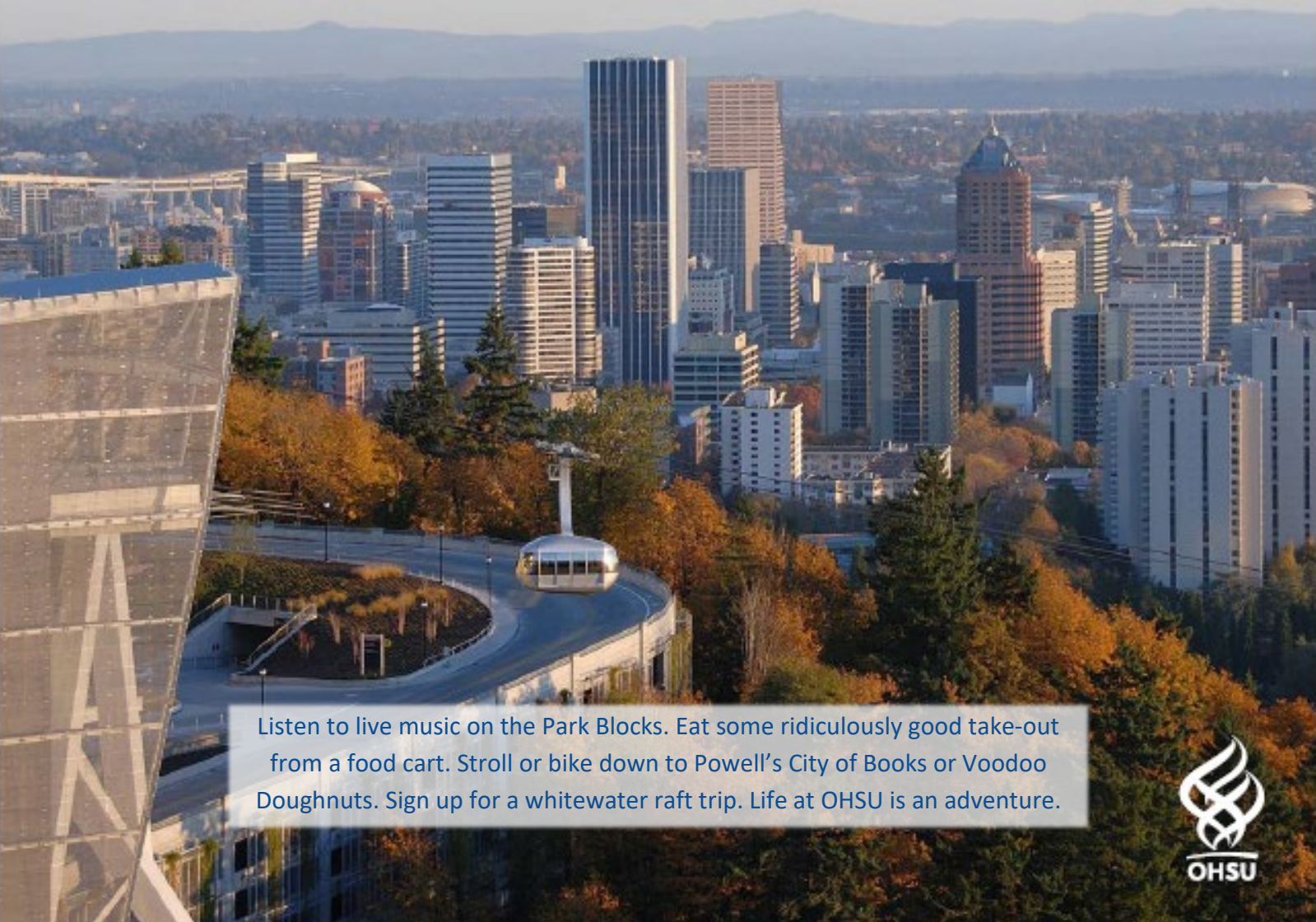
ABOUT PORTLAND, OREGON

Big city excitement and small-town charm make Portland, known as "the City of Roses" one of the most popular cities on the west coast. Situated approximately 70 miles from the Pacific Ocean where the Columbia and Willamette Rivers meet, Portland enjoys a magnificent setting, combining sparkling waterways with lush greenery rarely found in urban settings. Portland is home to approximately 610,000 residents and the population of the surrounding metropolitan area is approximately 2.35 million. Portland is widely recognized in national surveys and rankings as one of America's most livable cities. For more information about Portland, see: <https://www.travelportland.com/>

Portland's historic old town, many galleries and museums, Saturday Market, Waterfront Park and an abundance of fine restaurants keep residents and visitors busy and satisfied. The performing arts in the area offer classical music, jazz, and blues as well as theater and dance. Portland is just a short distance from the spectacular Columbia Gorge and Multnomah Falls, windsurfing at Hood River, valley wineries, skiing at Mt. Hood, and the drama of the Oregon coast.

Portland is known for its extensive park system of more than 200 parks. These encompass such areas as the elm-shaded South Park Blocks in the downtown area and Washington Park, home of the Rose Gardens and the Japanese Gardens. Portland's Forest Park, at nearly 5,000 acres, is the largest park within a city in the U.S. and has nearly 50 miles of walking trails.

Portland's award-winning mass transit system is one of the most extensive and advanced in the U.S. and includes buses and the MAX, an urban light rail line, as well as a downtown transit mall.

An aerial photograph of the Portland, Oregon skyline. In the foreground, a cable car is visible on a track, surrounded by trees with autumn foliage. The background shows a dense urban landscape with various skyscrapers and buildings under a clear sky.

Listen to live music on the Park Blocks. Eat some ridiculously good take-out from a food cart. Stroll or bike down to Powell's City of Books or Voodoo Doughnuts. Sign up for a whitewater raft trip. Life at OHSU is an adventure.

