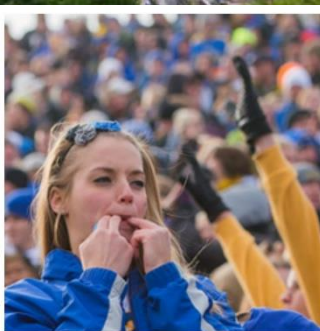


# South Dakota State University Brookings, SD

## Position Profile

### Director, Ness Division of Management & Economics February 2016

Prepared by:  
Summit Search Solutions, Inc.



**SOUTH DAKOTA  
STATE UNIVERSITY**

[www.sdstate.edu](http://www.sdstate.edu)

## THE OPPORTUNITY

---

The Director leads the division to synergize the participating university units' strengths in management and economics into high impact multidisciplinary research and education. He or she will work closely with the constituent deans, department heads and faculty members to integrate their collective assets toward research and education that is responsive, effective and innovative. The Director will draw on the intelligence and opportunities flowing from actively cultivated relationships with the growing business community and the public sector to understand the current needs and forecasted trends that will inform the division's visioning, planning, and implementation of research and curriculum programming. With skillful and focused leadership and bridge-building, the Director influences South Dakota's future by enabling SDSU to deliver the new knowledge and skilled graduates that are needed to support the state's economic growth. The University seeks an effective and passionate leader to establish this new organizational unit at a high level of performance.

The Director reports to the Ness Division of Management and Economics Dean's Council. The position is approximately 50% divisional administration/coordination and 50% teaching and scholarship. This is a 12-month appointment that carries academic rank in a discipline appropriate to the division (business economics, economics, data science, entrepreneurship, agricultural business, construction management, hospitality management, and operations management). Tenure and rank will be dependent upon academic credentials. Associate or full professor preferred.

## THE INSTITUTION

---

South Dakota State University (SDSU) is the state's largest, most comprehensive university. As South Dakota's Morrill Act land-grant university, SDSU had a fall 2014 enrollment of 12,557 students from all 50 states and 79 countries. Approximately 67 percent of SDSU students are residents of South Dakota, 29 percent are from other states and 4 percent from other countries. The University provides a rich academic experience in an environment of inclusion and access through inspired, student-centered education, creative activities and research, innovation and engagement.

SDSU comprises Colleges of Agriculture and Biological Sciences, Arts and Sciences, Education and Human Sciences, University College, Nursing, Pharmacy, the Jerome J. Lohr College of Engineering, the Van D. and Barbara B. Fishback Honors College and the Graduate School.

The American Association of University Professors categorizes SDSU as a Category I or doctoral-level institution. The University is designated as research high in the Carnegie Classifications. Over the last five years, university research has yielded 245 invention disclosures, 65 patents filed, 9 patents issued and 35 license agreements executed through the Office of Technology Transfer and Commercialization, resulting in more than \$10 million in license revenue.

The university has been designated an Innovation and Economic Prosperity University by the Association of Public and Land-grant Universities (APLU) and its Commission on Innovation, Competitiveness and Economic Prosperity is a major resource for the economic development needs of the state.

SDSU Extension, with eight Regional Extension Centers across the state, is South Dakota's source for objective, vetted and relevant new knowledge generated through research. Extension's online learning portal, iGrow.org, served nearly 600,000 users with more than 925,000 page views last year.

To read more, visit: <http://www.sdstate.edu>

**Location:** Brookings, South Dakota

## **THE NESS DIVISION OF MANAGEMENT AND ECONOMICS**

---

The Ness Division of Management and Economics is an interdepartmental/intercollege unit effective July 1, 2015. An interim division was operating for 18 months prior to formal approval by the South Dakota Board of Regents in fall 2015.

The division serves as a trans-college, interdisciplinary entity comprising faculty members from academic programs that share a common commitment to education and research in management, economics, and data analytics. The division fosters meaningful collaboration between the business and academic communities and will coordinate and advance efforts in curriculum optimization, student engagement, faculty interaction, interdisciplinary research, and external outreach. Internally, the division provides a forum and structure to foster communication, innovation, and efficiencies across programs, departments, and colleges. The division coordinates a core of management courses that are offered across a spectrum of majors in four colleges comprising the division, and a management minor available to all students.

### **Division outcomes:**

- Foster economic growth and development in South Dakota by educating the next generation of business and government leaders.
- Ensure that core concepts of management, economics, and data analytics are consistent across academic programs, departments, and colleges.
- Facilitate interdisciplinary faculty research pertaining to management, economics and decision science.
- Enhance academic experiences for students by ensuring course relevance and student engagement.
- Formalize the collaboration between SDSU faculty, staff, students, and external stakeholders in these fields.
- Support efforts toward achieving and maintaining accreditations.
- Strengthen faculty professional development opportunities.

## QUALIFICATIONS

---

The Director serves as the leader and coordinator of the division. The successful applicant must possess several key qualifications and qualities:

- Earned terminal degree and established scholarly credentials appropriate for tenure in one of the programs in the division;
- Entrepreneurial ability to integrate a broad range of ideas and concepts drawn from multiple constituencies into strategic approaches;
- Demonstrated track record of building strong relationships and collaborations among faculty, administrators, students, business and industry leaders, donors, government officials, funding agency decision-makers and the public;
- Proven success in procuring extramural grants, contracts and sponsorships;
- Knowledge of curriculum and academic accreditation processes;
- Demonstrated ability to think creatively and independently on concepts requiring advanced analytical skills;
- Record of successful leadership in a complex, multi-function environment such as an academic organization with public and industry stakeholders; and the
- Vision and persistence integral to building a recognized and sustainable division based on excellence and high performance in academic programs, research, consultancies, service and industry and public engagement.

## PROCEDURE FOR CANDIDACY

---

Confidential review of applications will begin immediately and continue until the position is filled. Please submit curriculum vitae and a letter summarizing your relevant experiences and interest upon application.

Click here to apply: [Apply Now](#)

Or copy and paste the following link into your browser:

<https://summitsearchsolutions.catsone.com/careers/index.php?m=portal&a=apply&jobOrderID=7023867&portalID=5652>

### For nominations or further information:

**Stephanie Fowler**

Senior Consultant

Summit Search Solutions, Inc.

Direct: 530-677-9945

[sfowler@summitsearchsolutions.com](mailto:sfowler@summitsearchsolutions.com)

**Carrie Coward**

President

Summit Search Solutions, Inc.

Direct: 828-669-3850

[ccoward@summitsearchsolutions.com](mailto:ccoward@summitsearchsolutions.com)

*South Dakota State University offers equal opportunities in employment and for access to and participation in educational, athletic, extension and other institutional services and activities to all persons qualified by academic preparation, experience, and ability for the various levels of employment or academic program or other institutional service, without discrimination based on sex, race, color, creed, national origin, ancestry, citizenship, gender, gender identification, transgender, sexual orientation, religion, age, disability, genetic information or veteran status or on any other status that may become protected under law against discrimination.*





## BROOKINGS, SOUTH DAKOTA

Brookings, a community of 22,591, is located in eastern South Dakota, just minutes from the Minnesota border and less than an hour's drive to the state's largest city, Sioux Falls. Students from communities in Nebraska, North Dakota and Iowa find SDSU within an easy day's drive.

What really makes Brookings special is its unique neighborhoods, tree-lined streets, leisurely pace of living, and interesting people. It is a thriving community with an extraordinary quality of life, a booming job market, and an outstanding school system. The city recently ranked 5th on the Top 10 Small Towns 2013 List on Livability.com.

Interesting facts about Brookings and South Dakota:

(Information taken from: <http://www.visitbrookingsd.com/things-to-do/> and <http://www.travelsouthdakota.com/>)

- Brookings is the fourth-largest city in the state of South Dakota.
- Residents enjoy the city's variety of attractions, which include the Children's Museum of South Dakota, Hillcrest Aquatic Center, Dakota Nature Park, McCrory Gardens, and the lively art scene at local museums and galleries.
- Brookings County has a population of 31,965 and the county seat is located in Brookings.
- According to FBI statistics, Brookings' rate of serious crime is 87 percent lower than the national average.
- Based on average housing costs, utilities, health care, transportation, groceries and other services, Brookings' cost of living is 6.1 percent below the national average.
- Brookings has a strong and diversified economy. Manufacturing remains the top industry while high-tech, tourism, retail, health care, business and information services are growth sectors.



*For additional information on Brookings and South Dakota, please visit:*

City of Brookings, <http://www.cityofbrookings.org/>

Brookings Chamber of Commerce, <http://www.brookingschamber.org/>

Brookings Convention & Visitors Bureau, <http://www.visitbrookingsd.com/>



Summit Search Solutions, Inc. is a boutique executive search firm dedicated to serving education, healthcare and not-for-profit communities nationwide. Based in Asheville, NC, Summit has a team of experienced recruiting consultants in strategic locations across the country including New York, North Carolina, Colorado, and California.