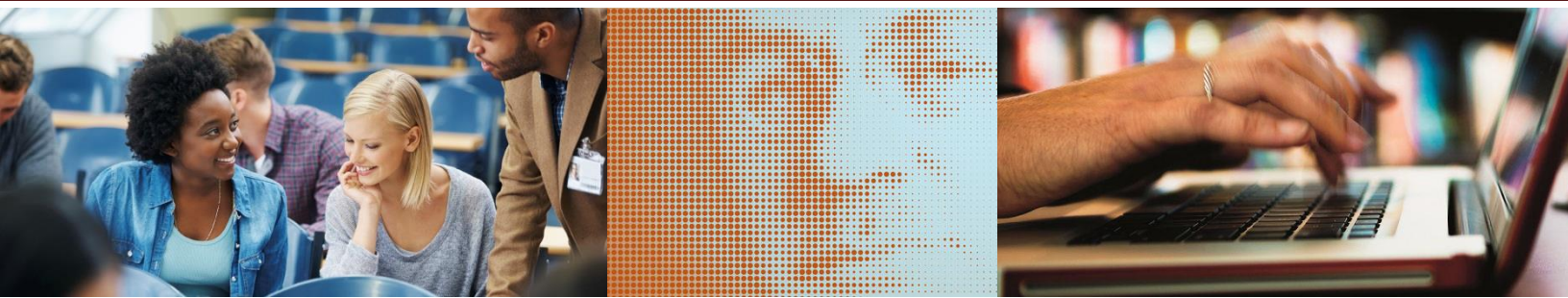


Adler University
Chicago, Illinois

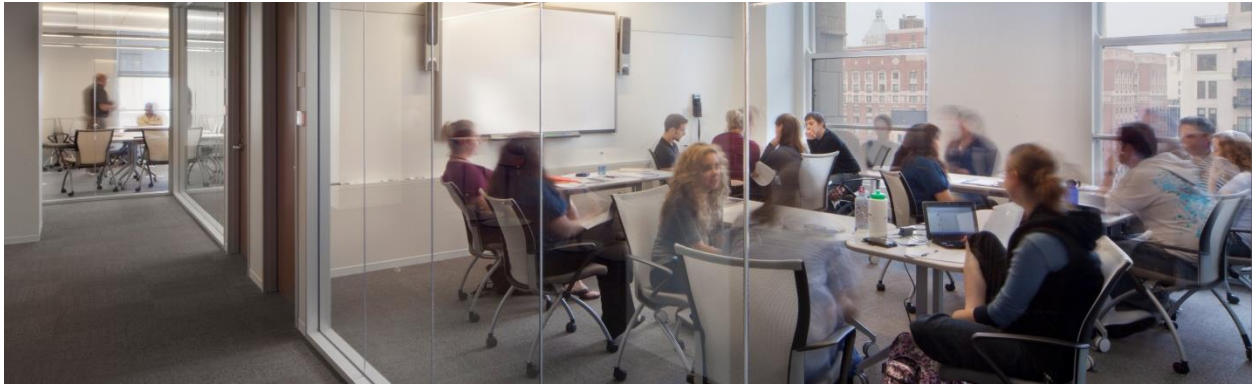
Position Specifications
Chair, Department of Couple and Family Therapy
January 2015

Prepared by:
Summit Search Solutions, Inc.



ADLER UNIVERSITY

www.adler.edu



ABOUT ADLER UNIVERSITY

Adler University educates students to engage the world and create a more just society. Adler's students graduate prepared for an evolving job market and emerging fields that address ever-changing social needs—locally, nationally, and globally.

Established in 1952 to build on the pioneering work of Alfred Adler, the first community psychologist, the University offers master's and doctoral programs for social change, with campuses in downtown Chicago and Vancouver, and an online Global Campus. More than 1,200 students are currently enrolled.

The University changed its name from the Adler School of Professional Psychology in January 2015 to reflect its growing scope of programs and more strongly support its vision as the leading academic institution advancing socially responsible practice, healthy communities, and a more just society.

Adler's campus is in the heart of downtown Chicago and features state-of-the-art labs and learning facilities. Nationally recognized for innovative practices in graduate education and community engagement, the University partners with more than 800 agencies providing students with high impact practicum, internship, and service learning experiences. Faculty and students work with several university institutes and centers in applied research, community outreach, and professional development. Adler University has earned the Community Engagement Classification by the Carnegie Foundation for the Advancement of Teaching, recognizing alignment among campus mission, culture, leadership, resources, and practices of exemplary community engagement.

For 63 years, the institution has adhered to the Adlerian principles upon which it was founded and will continue to do so. Over the course of its current five-year strategic plan, since 2010, the institution has attracted enrollment growth of 43%, nearly doubled its workforce, significantly reduced its student-to-faculty ratio, and more than doubled the size of its Chicago campus. The institution has also expanded and aligned its education and community engagement with social responsibility, expanded its global involvement and impact, and achieved significant growth in institutional advancement. Read more: <http://www.adler.edu>

Adler University is accredited by the Higher Learning Commission of the North Central Association of Colleges and Schools.

Location: 17 North Dearborn Street, Chicago, IL 60602

THE POSITION

The **Department Chair** serves as the administrative head of the Couple and Family Therapy Department, and leads department faculty in preparing socially responsible practitioners within the field. This person will contribute significantly to the pedagogy and scholarship of the master's program in Couple and Family Therapy and the doctorate in Couple and Family Therapy (DCFT) program and will oversee processes related to COAMFTE accreditation.

- Facilitate the development, review, and implementation of departmental strategic plans that align with the mission and strategic plan of the institution.
- Ensure departmental compliance of all Adler academic and administrative policies and procedures.
- Encourage and facilitate the development of new academic initiatives and support their implementation.
- Provide final departmental approval for new/revised courses, program revisions and new programs and facilitate the process through appropriate committees; review and approve Master Course Syllabus for all courses.
- Guide the application for and/or maintenance of COAMFTE accreditation.
- Provide leadership within the department for the institutional program review process and annual program snapshot assessment.
- Insure the creation and implementation of each academic program's education outcomes including program outcomes, student learning outcomes and faculty outcomes.
- Lead the department's annual review(s) of the educational outcome data for each academic program. Insure the implementation of programmatic changes identified by this annual review process.
- Ensure timely development of departmental Student Learning Outcome Assessment Program (SLOAP) reports and other assessment data. Works closely with department faculty to ensure assessment data is utilized to improve curriculum and student learning outcomes.
- Oversee clinical training components and delivery of departmental programs.
- Select and evaluate full-time and adjunct faculty members teaching within Department. Provide continuous support for core faculty development. Review course evaluations and provide feedback to all faculty in a timely manner. Meet with core faculty to develop annual load forms and professional goals.
- Schedule courses for the department program classes; assign full-time and adjunct faculty to course sections.
- Teach courses within department programs at a reduced load given administrative responsibilities.
- Represent the department at Academic Affairs Chairs' meetings. Communicates pertinent information back to the department to ensure compliance with internal and external policies and procedures, provide input regarding recruitment and marketing activities with appropriate support staff.

- Collaborate across the school and community; manage continuous and active linkages across all units of the Adler School. Create and maintain external community linkages to support departmental goals, collaborate with other department chairs in establishing joint programming initiatives. Serve as primary liaison between the department and various faculty and governance bodies.
- Manage departmental budget, monitor and approve expenditures, develop and maintain timeline for appropriate accreditation/certification cycles.

QUALIFICATIONS

- Earned doctoral degree in Marriage and Family Therapy or related field.
- AAMFT Approved Supervisor and licensed as a couple and family therapist.
- Strong record of leadership in an academic setting, teaching, and clinical training.
- Record of familiarity or participation in COAMFTE accreditation process.

PROCEDURE FOR CANDIDACY

Confidential review of applications will begin immediately and continue until the position is filled.

Click the following to apply and submit your CV/resume: [Apply Now](#)

Or copy and paste the following link into your browser:

<http://summitsearchsolutions.catsone.com/careers/index.php?m=portal&a=apply&jobOrderID=4780050&portalID=5652>

For nominations or further information:

Stephanie Fowler

Senior Consultant
Summit Search Solutions, Inc.
Direct: 530-677-9945
sfowler@summitsearchsolutions.com

Carrie Coward

President
Summit Search Solutions, Inc.
Direct: 828-669-3850
ccoward@summitsearchsolutions.com

The Adler University provides equal employment opportunities (EEO) to all employees and applicants for employment without regard to race, color, religion, gender, sexual orientation, national origin, age, disability, genetic information, marital status or status as a covered veteran in accordance with applicable state and local laws governing nondiscrimination in employment.



[Summit Search Solutions, Inc.](#) is a boutique executive search firm dedicated to serving the higher education sector. Summit employs passionate search professionals who know and believe in the organizations and talent we represent and are committed to placing the right candidate in the right job. Summit has offices in NY, NC, MI, CO and CA.

CHICAGO, ILLINOIS

Few cities in the world can match the character and culture of Chicago. Visitors and residents alike find world-class dining, museums, entertainment, and striking architecture in the largest and most visited city in the Midwest.

Chicago is the third most populous city in the United States with approximately 2.7 million residents. The city is traversed by the Chicago and Calumet rivers, and with many parks and green spaces the city offers stunning natural beauty along with an urban landscape. Lake Michigan offers a wonderful escape, and Chicagoans can stroll the shoreline, play volleyball, bike, or jog along the lakefront. The Chicago Park District consists of 552 parks with over 7,300 acres of municipal parkland. There are 33 sand beaches, two world-class conservatories, sixteen historic lagoons, and ten bird and wildlife gardens.



As a multicultural city that thrives on the harmony and diversity of its neighborhoods, Chicago today embodies the values of America's heartland – integrity, hard work, and community – and reflects the ideals in the social fabric of its 77 distinct neighborhoods. Some favorite ethnic communities to explore in Chicago include Greektown, Chinatown, Ukrainian Village, and Little Italy.

Chicago is recognized across the United States as a very passionate sports town with professional teams such as the Chicago Bears, Blackhawks, Bulls, Fire, Cubs, and White Sox.

The dining choices in Chicago area are as diverse as the people, and everything from ethnic food to contemporary and innovative dining can be found. The city is home to 23 Michelin-starred restaurants, with one three-star restaurant, Alinea. *Savour* magazine even dubbed Chicago “America’s new culinary star.”

Chicago has long been known for theatre, from big productions at landmark venues in Chicago’s downtown Theatre District to experimental works at small storefront theaters in outlying neighborhoods. In addition, Chicago's theatre community spawned modern improvisational theatre. When it comes to music, there are live performances of every kind every night of the week, although jazz and blues have a special place in the city’s cultural history.

Chicago is a travel hub, which means it’s easy to get to and from anywhere in the country or the world. Chicago is served by Midway International Airport on the south side and O’Hare International Airport, the world's third busiest airport, on the far northwest side. Once one is in Chicago, there are many convenient options for getting around, from bike paths and L trains to buses and cabs.

For additional information on Chicago, please visit:

<http://www.cityofchicago.org/city/en.html>
<http://www.choosechicago.com/>