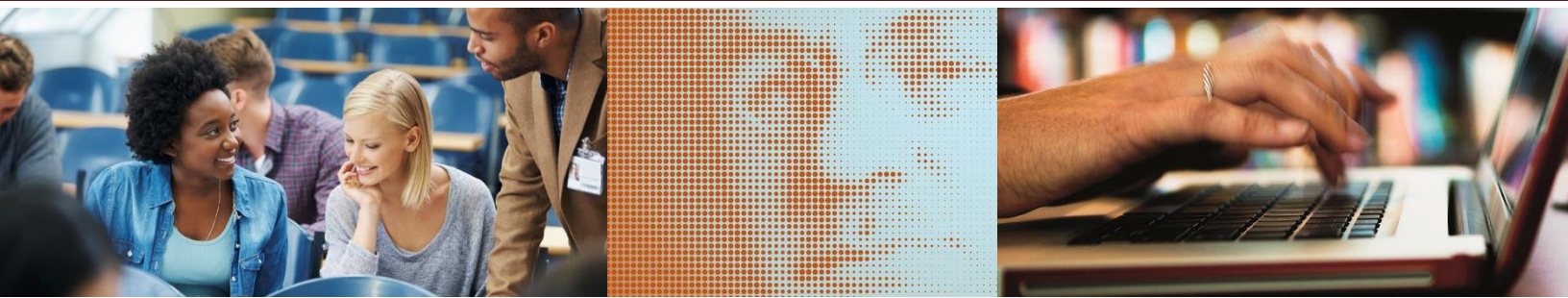


**Adler School of Professional Psychology
Chicago, Illinois**

**Position Specifications
Executive Dean of the Global Campus (Online)
October 2014**

Prepared by:
Summit Search Solutions, Inc.



ADLER SCHOOL of Professional Psychology

www.adler.edu



ABOUT THE ADLER SCHOOL OF PROFESSIONAL PSYCHOLOGY

Founded in 1952, the Adler School of Professional Psychology provides a range of innovative graduate programs at its campuses in Chicago, IL, Vancouver, BC, and through Adler Global Campus Online. The Adler School continues the pioneering work of the first community psychologist, Alfred Adler, by graduating socially responsible practitioners, by engaging communities, and by advancing social justice. Alfred Adler began community psychology by articulating the constructs of *gemeinschaftsgefühl* (social interest or the connection between individual and community well-being) and systemic/structural community intervention (such as preventative public health measures). The Adler School, as a higher education institution, continues his work today through the production of three outcomes which are specified in the Mission.

Socially Responsible Practitioners: Socially responsible practitioners are educated to be effective personal and social change agents in the pursuit of justice.

Community Engagement: Community engagement is collaborative partnership that strengthens communities, provides service, and prepares students.

Social Justice: Social justice refers to equitable distribution of economic, political, civil, cultural, social, and other resources and opportunities in society in order to promote the optimal development of persons and communities.

The Adler School's doctoral and masters programs educate practitioners in applications of psychology, criminal justice, public policy and related fields informed by the School's social justice perspective. The School also houses an Institute on Social Exclusion, Institute on Public Safety and Social Justice, the LGBTQ Mental Health and Inclusion Center, and the Adler Child Guidance Center. The School's social justice mission guides the work of these centers and institutes, in addition to all curriculum, practica and training for all traditional and online students.

The Adler School began providing online education options in 2007. Since then, the School's unique online offerings have attracted a robustly growing share of the School's new student

enrollment. Adler School currently offers five online programs. In 2010, the Sloan Consortium recognized the Department of Online Learning with an Effective Practice Award for best practices in innovating faculty and student support systems. To learn more: <http://www.adler.edu>

University Status – January 2015

In November 2013, the Board of Trustees voted to adopt Adler University, effective in January 2015, as the name that best supports the school's vision as "the leading academic institution advancing socially responsible practice, healthy communities, and a more just society."

Adler School will become Adler University in January 2015. At the same time, the University will launch the Global Campus which will significantly expand the institution's online programming and impact.

To view a summary of Adler's strategic plan, visit:

http://adler.edu/resources/content/1/9/9/documents/StrategicPlan_2010-2015.pdf. The University is currently engaged in a community conversation to craft a strategic plan to realize Adler University from 2015-2020.

Location:

17 North Dearborn Street, Chicago, IL 60602

THE OPPORTUNITY

Position Summary:

The **Executive Dean of the Global Campus** is the chief administrative and academic officer for the Global Campus of Adler University, which will launch in fall 2015 with five online academic programs. The Executive Dean is responsible for the development and administration of all academic policies, programs, and budgets for the Global Campus. She or he holds principle responsibility for managing the relationship with HotChalk, the University's vendor for supporting online education, and oversees the Division of Online Education, which supports the Chicago, Vancouver, and Global Campuses. The Executive Dean oversees faculty recruitment and evaluation, as well as student admissions and enrollment, with HotChalk support. Importantly, the Executive Dean leads the University in defining and planning new online academic programs and will develop plans for excellence in accordance with the School's strategic plan for 2015 – 2020.

Key Responsibilities:

- Partner effectively with HotChalk in establishing the goals and operational plans for enhancing and growing the Global Campus
- Direct all major decisions that ensure program offerings, growth, program quality and student success

- Manage the budget and finances for the Global Campus
- Manage and develop the online learning division staff and all online program faculty
- Partner effectively with the faculty to create a cohesive unit with a structure for academic governance
- Set enrollment goals and drive admissions decisions
- Ensure that Adler's values, mission, and quality are central to the student experience
- Participate in leading all three campuses of Adler University

Reporting Relationships:

The Executive Dean reports to the President and serves on the leadership team of the University. Direct reports include the staff of the current Department of Online Education and six online Program Directors.

QUALIFICATIONS AND CORE BEHAVIORS

Desired Qualifications:

- Earned doctorate from an accredited institution preferred; masters may be considered based on related experience
- A strong record of academic administrative experience in an online setting with exemplary skills in leading, managing, budgeting, planning and collaborating
- Creativity and vision to lead a department growing in size, scope and prominence
- Demonstrated experience in on-line education with success in new program development, scale, enrollment management, student services and faculty development
- Demonstrated effective leadership in interacting and collaborating with vendors, administrators, staff and faculty
- Understanding of current pedagogy, technologies and best practices for all online and blended learning modalities
- Ability to support Adler's vision, mission and key strategies, supporting and modeling the institution's values of social interest, pluralism, courage, excellence and pragmatism

Universal Core Behaviors:

- Communication
- Teamwork and collaboration
- Responsiveness to change
- Results-oriented
- Quality and accountability

PROCEDURE FOR CANDIDACY

Confidential review of applications will begin immediately and continue until the position is filled.

Click the following to apply and submit your CV/resume:

[Apply Now](#)

Or copy and paste the following link into your browser:

<http://summitsearchsolutions.catsone.com/careers/index.php?m=portal&a=apply&jobOrderID=4347077&portalID=5652>

For nominations or further information:

Beth Baldino

Senior Consultant

Summit Search Solutions, Inc.

Direct: 828-645-8967

bbaldino@summitsearchsolutions.com

Carrie Coward

Senior Consultant

Summit Search Solutions, Inc.

Direct: 828-669-3850

ccoward@summitsearchsolutions.com

The Adler School of Professional Psychology provides equal employment opportunities (EEO) to all employees and applicants for employment without regard to race, color, religion, gender, sexual orientation, national origin, age, disability, genetic information, marital status or status as a covered veteran in accordance with applicable state and local laws governing nondiscrimination in employment.



[Summit Search Solutions, Inc.](#) is a boutique executive search firm dedicated to serving education, healthcare and not-for-profit communities nationwide. Summit offers organizations premier services with personalized service, impeccable process, and results that surpass client expectations. Summit employs passionate search professionals who know and believe in the organizations and talent we represent and are committed to placing the right candidate in the right job. Our mission is to facilitate the placement of top talent for mission driven organizations. Based in Asheville, NC, Summit has a team of experienced recruiting consultants in strategic locations across the country including New York, North Carolina, Michigan, Colorado and California.

CHICAGO, ILLINOIS

Few cities in the world can match the character and culture of Chicago. Visitors and residents alike find world-class dining, museums, entertainment, and striking architecture in the largest and most visited city in the Midwest.

Chicago is the third most populous city in the United States with approximately 2.7 million residents. The city is traversed by the Chicago and Calumet rivers, and with many parks and green spaces the city offers stunning natural beauty along with an urban landscape. Lake Michigan offers a wonderful escape, and Chicagoans can stroll the shoreline, play volleyball, bike, or jog along the lakefront. The Chicago Park District consists of 552 parks with over 7,300 acres of municipal parkland. There are 33 sand beaches, two world-class conservatories, sixteen historic lagoons, and ten bird and wildlife gardens.



As a multicultural city that thrives on the harmony and diversity of its neighborhoods, Chicago today embodies the values of America's heartland – integrity, hard work, and community – and reflects the ideals in the social fabric of its 77 distinct neighborhoods. Some favorite ethnic communities to explore in Chicago include Greektown, Chinatown, Ukrainian Village, and Little Italy.

Chicago is recognized across the United States as a very passionate sports town with professional teams such as the Chicago Bears, Blackhawks, Bulls, Fire, Cubs, and White Sox.

The dining choices in Chicago area are as diverse as the people, and everything from ethnic food to contemporary and innovative dining can be found. The city is home to 23 Michelin-starred restaurants, with one three-star restaurant, Alinea. *Savour* magazine even dubbed Chicago “America’s new culinary star.”

Chicago has long been known for theatre, from big productions at landmark venues in Chicago’s downtown Theatre District to experimental works at small storefront theaters in outlying neighborhoods. In addition, Chicago's theatre community spawned modern improvisational theatre. When it comes to music, there are live performances of every kind every night of the week, although jazz and blues have a special place in the city’s cultural history.

Chicago is a travel hub, which means it’s easy to get to and from anywhere in the country or the world. Chicago is served by Midway International Airport on the south side and O’Hare International Airport, the world's third busiest airport, on the far northwest side. Once one is in Chicago, there are many convenient options for getting around, from bike paths and L trains to buses and cabs.

For additional information on Chicago, please visit:

<http://www.cityofchicago.org/city/en.html>
<http://www.choosechicago.com/>